

## Automatic Blindstitch Sleeve Hemmer

### Shirt Bodies and Sleeves

An electronically controlled workstation consisting of a conveyORIZED upturn hemming apparatus with two-or-three thread overlock sewing head, electronic motor, automatic edge trim and cut apart, and self-contained waste disposal.

#### OPERATION

The operator places parts to an edge guide and initiates sewing. The unit will continue sewing as long as parts are placed on the conveyor within a specific distance. The sew cycle will stop if the operator fails to position the next part.

#### OPTIONS

- **2211-EG3** - Edge guiding system
- **2211PKIT01** - Pocket loading station
- **311-006B** - Fold in half stacker

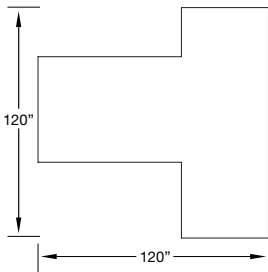
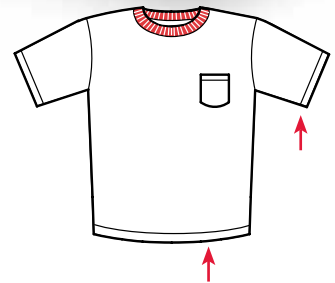
Images may include options.



Pictured is the model 215. The Model 217 is similar to the 215 but with a longer and wider conveyor table for big panels like shirt bodies (98.5" long x 25.5" wide)



Patented Serial Bus Control System



Footprint

#### SPECIFICATIONS

Voltage (v/ph/hz)	220v 1ph
Current (amps)	5
Air pressure (psi)	90
Air consumption (cfm)	21
Shipping weight (lbs)	1300
Shipping dimensions (w/l/h, inch)	106 x 60 x 65

#### PRODUCTION

Sleeves per hour	1450-1650
Pockets per hour	1245

Depending on material and size of parts

www.atlatt.com • sales@atlatt.com

PATENTS: Our equipment may be covered by one or more patents. Please go to the following web page for an up-to-date patent list: www.atlatt.com/patents.php © 2018 Atlanta Attachment Co. 17168042718

362 Industrial Park Drive Lawrenceville, GA 30046 USA +1 (770) 963-7369 • FAX +1 (770) 963-7641



**Atlanta Attachment Company**

The Company that **Sudden Service** built