

model: **314DA41**
Cord Welting Workstation



Parts List

"Sudden Service"



Atlanta Attachment Company

401 Industrial Park Dr.
Lawrenceville, GA 30045
Phone: 770-963-7369
www.atlatt.com



One-Stop Shopping
for Expendable Replacement
Parts for AAC & Other Bedding
Equipment Suppliers
Toll Free: **1-866-885-5100**

www.atlantapartsdepot.com

Revision 6
Updated: March 16, 2005

Atlanta Attachment Company, Inc.

Confidential And Proprietary Information

The materials contained herein are confidential and proprietary information of Atlanta Attachment Company. In addition to any confidentiality and non-disclosure obligations that currently exist between you and Atlanta Attachment Company, your use of these materials serves as an acknowledgment of the confidential and proprietary nature of these materials and your duty not to make any unauthorized use or disclosure of these materials.

All materials contained herein are additionally protected by United States Copyright law and may not be used, disclosed, reproduced, distributed, published or sold without the express written consent of Atlanta Attachment Company, which consent may be withheld in Atlanta Attachment Company's sole discretion. You may not alter or remove any copyright, trademark or other notice from copies of these materials.

Patents & Patents Pending

The sale of this product does not sell or otherwise transfer any license or other rights under any U.S. Patent or other corresponding foreign patent.

This equipment is protected by one or more of the following patents:

US patents: 4,038,933; 4,280,421; 4,432,294; 4,466,367; 4,644,883; 4,886,005; 5,134,947; 5,159,889; 5,203,270; 5,307,750; 5,373,798; 5,437,238; 5,522,332; 5,524,563; 5,562,060; 5,634,418; 5,647,293; 5,657,711; 5,743,202; 5,865,135; 5,899,159; 5,915,319; 5,918,560; 5,924,376; 5,979,345; 6,035,794

Foreign patents - 2,084,055; 2,076,379; 2,177,389; 2,210,569; 4-504,742; 8-511,916; 9-520,472; 0,537,323; 92,905,522.6; 95,935,082.8; 96,936,922.2; 5,159,889; 5,203,270.

Other U.S. and Foreign Patents Pending.



IMPORTANT

It is important to read and understand the information contained within this manual before attempting to operate the machine. Atlanta Attachment Co., Inc. shall not be held liable for damage resulting from misuse of the information presented within, and reserves the right to change the information contained within, without prior notification.

Atlanta Attachment Company
401 Industrial Park Drive
Lawrenceville, Georgia 30045
Phone: (770) 963-7369
Fax: (770) 963-7641
Email: sales@atlatt.com

Table Of Contents

Assembly Drawings & Parts Lists	1
3314DA41B Cord Welting Workstation	3
1961-320G Rewinder Assembly	5
778-8 Roll Holder Assembly	7
778-9 Roll Holder Assembly	9
781-3-S14 Angled Roll Holder Assembly	11
AAR35AA41 Z-Max Puller Assembly	13
F212-A41 Swingout Bracket Assembly	15
F221-T010 Tension Assembly	17
3314D1000 Border Trough Assembly (Optional)	19
AAP35AA41-PAR Parameter Settings	20
AAP35AA41-INS Instructional Drawing	21
AAP35AA41PD Pneumatic Diagram	22
AAP35AA41WD Wiring Diagram	23
3314DA41-PD Pneumatic Diagram	24

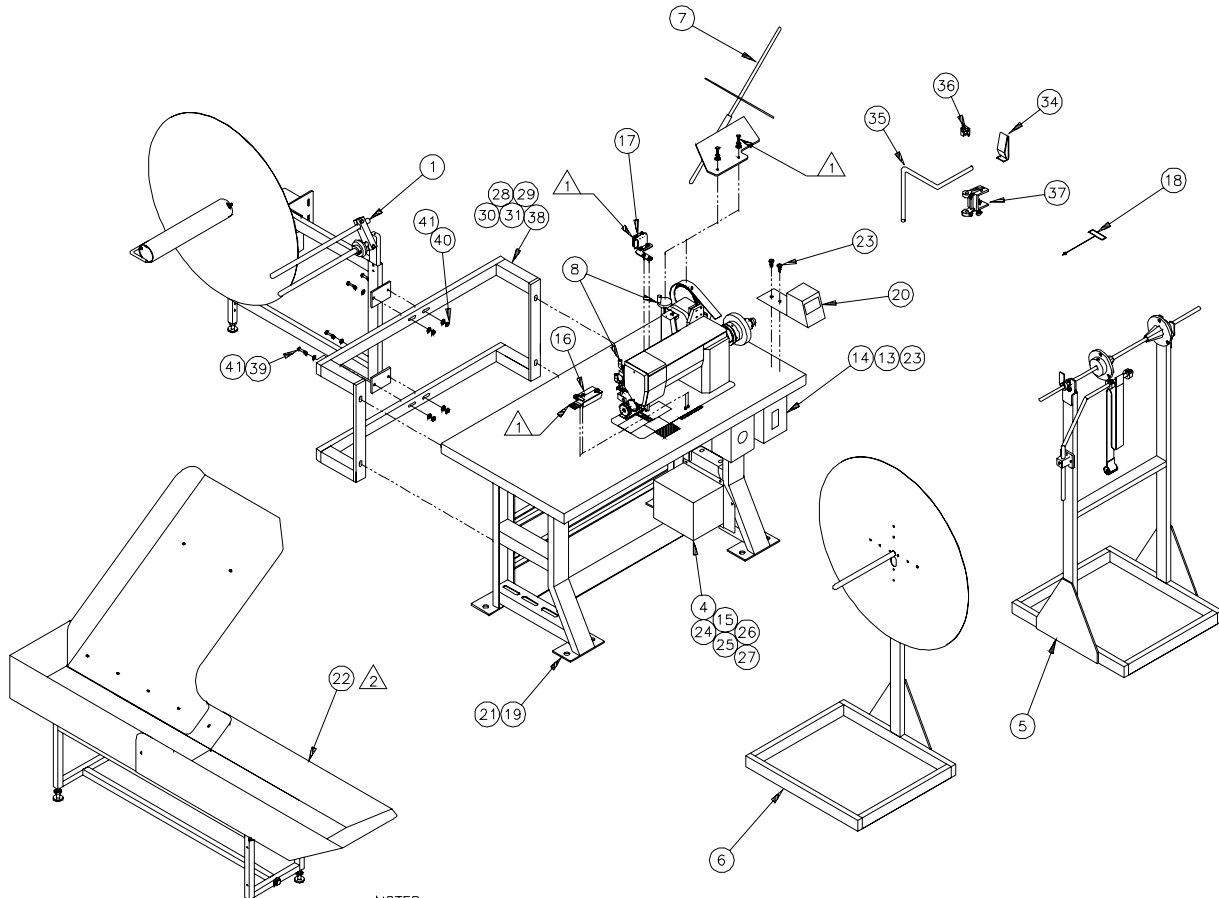
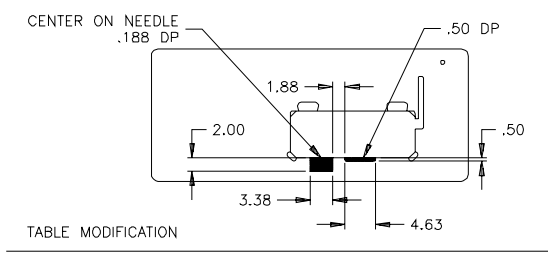
Assembly Drawings & Parts Lists

The materials contained herein are confidential and proprietary information of Atlanta Attachment Company. In addition to any confidentiality and non-disclosure obligations that currently exist between you and Atlanta Attachment Company, your use of these materials serves as an acknowledgment of the confidential and proprietary nature of these materials and your duty not to make any unauthorized use or disclosure of these materials.



One-Stop Shopping
For Expendable Replacement Parts for AAC & Other Bedding Equipment Suppliers
Toll Free: **1-866-885-5100**
www.atlantapartsdepot.com • sales@atlantapartsdepot.com





- NOTES:
- ① FASTENERS PROVIDED WITH SUB-ASSY
 - ② OPTIONAL
 - ③ NOT SHOWN

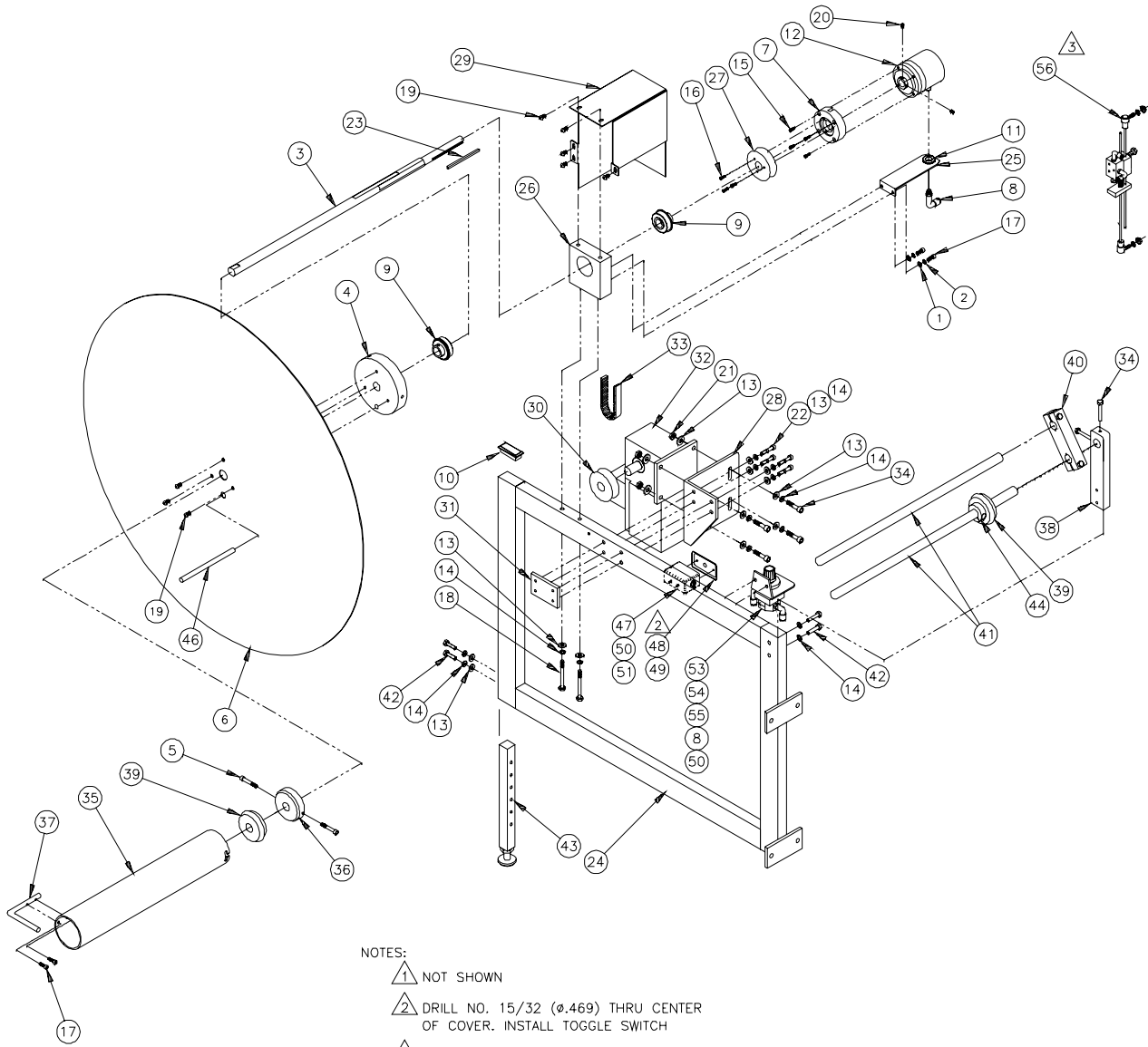
Note: Refer to the pneumatic diagram on page 24 for plumbing air clutch and treadle.



3314DA41B Cord Welting Workstation

#	Part #	Description	Qty	Pg	#	Part #	Description	Qty	Pg
1	1961-320G	Rewind Assy	1	5	22	3314D1000	Border Trough (Optional)	Ref.	19
2	3314DA41-PD	Pneumatic Diagram	AR	24	23	SSZH#10032	Screw, Sheet Metal	4	
3	314-D	Folder	1		24	SSHC25096	Screw, Hex Cap	2	
4	3515-22	Transformer Mnt Plate	1		25	WWF3/8	Flat Washer	4	
5	778-8	Roll Holder Stand	1	7	26	NNH3/8-16	Hex Nut	2	
6	778-9	Roll Holder Assy	1	9	27	SSSC01032	Screw, Socket Cap	4	
7	781--3-S14	Roll Holder	1	11	28	WWF1/2	Flat Washer	8	
8	AAP35AA41	Z-Max Puller	1		29	WWL1/2	Lock Washer	4	
9	AAP35AA41-INS	Instructional	AR	21	30	SSHC45128	Screw, Hex Cap	4	
10	AAP35AA41-PAR	Parameter Settings	AR	20	31	NNH1/2-13	Hex Nut	4	
11	AAP35AA41PD	Pneumatic Diagram	AR	22	32	WWF4	Flat Washer	4	
12	AAP35AA41WD	Wiring Diagram	AR	23	33	SSPS70016	Screw, Pan Head	4	
13	EE2510KG2	Switch	1		34	1961-386	Unfolding Brkt	1	
14	FFHBL4579C	Receptacle	1		35	1961-387	Rod	1	
15	FF3S1F	Transformer	1		36	265155A	Eye Holder	1	
16	F212-A41	Swingout Brkt Assy	1	15	37	A-7-1/2	Table Clamp Assy	1	
17	F212-T010	Tension Assy	1	17	38	1961-390	Spacer Frame	1	
18	F314-D-001	Cord Pusher	1		39	SSHC01112	Screw, Hex Cap	4	
19	M1A41-003	Gauge Set	1		40	NNK1/4-20	Kep Nut	4	
20	SDUR-A3530	Counter	1		41	WWFS1/4	Flat Washer	8	
21	SDUR-767FA373	Sew Head	1		AAC Drawing Number 192064A Rev. 2				





- NOTES:
- ① NOT SHOWN
 - ② DRILL NO. 15/32 (Ø.469) THRU CENTER OF COVER. INSTALL TOGGLE SWITCH
 - ③ REPLACES EXISTING TREADLE ROD ON SEWING STAND

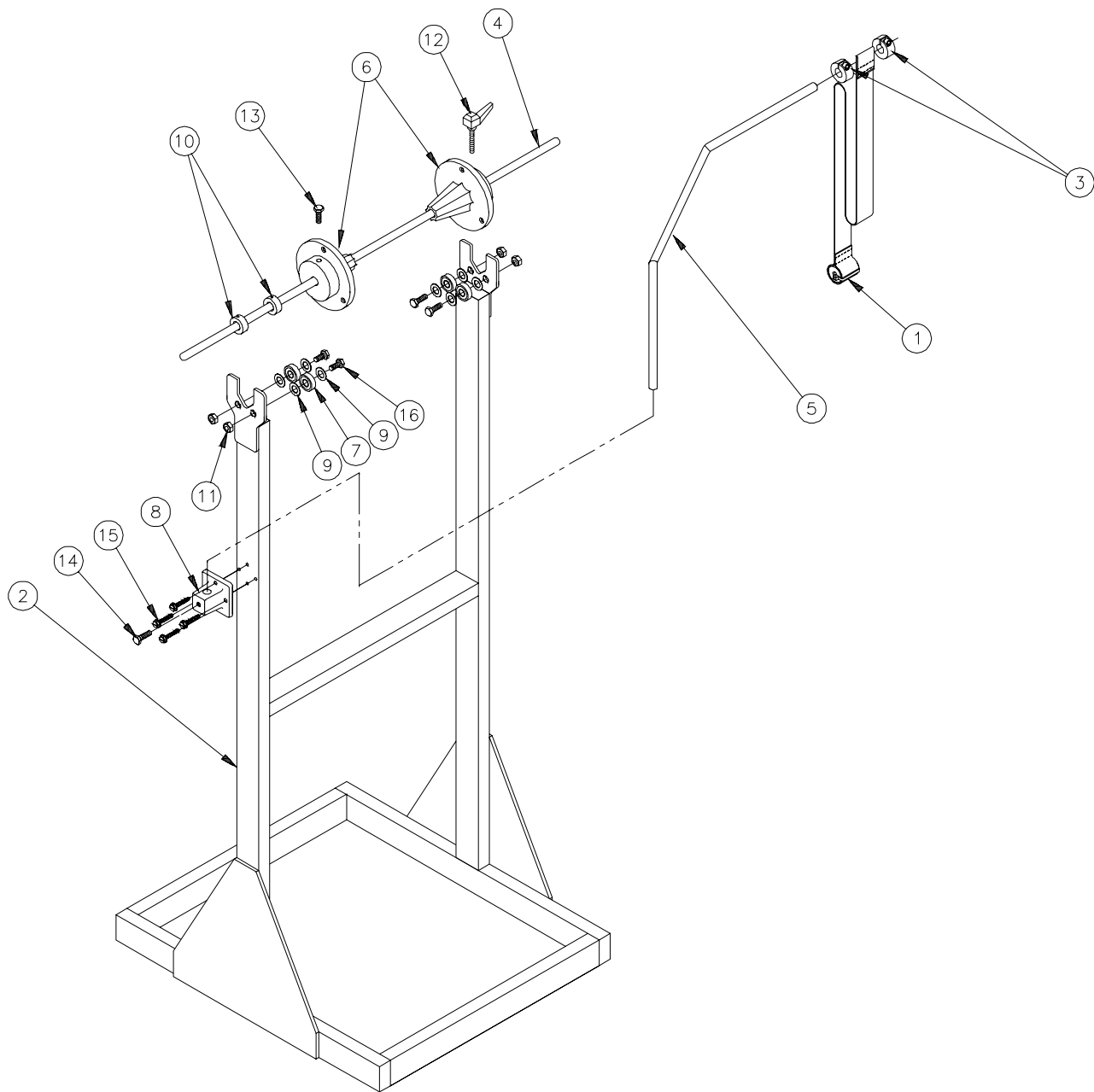
Note: Refer to the pneumatic diagram on page 24 for plumbing air clutch and treadle.



1961-320G Rewinder Assembly

#	Part #	Description	Qty	Pg	#	Part #	Description	Qty	Pg
1	WWFS10	Flat Washer	2		30	1961-369	Drive	1	
2	WWL10	Lock Washer	2		31	1961-370	Nut Plate	1	
3	1961-375	Clutch Shaft	1		32	23218D	Gear Motor	1	
4	1961-359B	Spindle Hub	1		33	GG187L050	Gear Belt	1	
5	SSSC01096	Screw, Socket Cap	2		34	SSHC01080	Screw, Hex Cap	8	
6	1961-361A	Disc, Alu, 32"	1		35	1961-372	Rewind Sleeve	1	
7	97-3320	Clutch Gear Mnt	1		36	1961-373	Sleeve Hub	1	
8	AAQME-5-8	Quick Male Elbow	3		37	1961-374A	Rod	1	
9	BBS8703-88	Ball Bearing	2		38	1962-3202	Puller Support	1	
10	MM132-1496	End Cap	1		39	1961-379	Support, Rewind Sleeve	2	
11	MM9600K21	Rubber Grommet	1		40	1962-3201	Tensioner Clamp	1	
12	MM800100	Air Clutch	1		41	33008202	Rod, 3/4 x 21	2	
13	WWFS1/4	Flat Washer	24		42	SSHC01048	Screw, Hex Cap	4	
14	WWL1/4	Lock Washer	14		43	26238	Leg Assy	1	
15	SSSC98040	Screw, Socket Cap	4		44	CCCL12F	Clamp Collar	1	
16	SSSC90032	Screw, Socket Cap	3		45	1961-320G-WD	Wiring Diagram	AR	
17	SSSC98032	Screw, Socket Cap	4		46	1335-320	Rod, 3/8 SS	1	
18	SSHC01160	Screw, Hex Cap	2		47	K-230A	Metal Box	1	
19	SSBC01032	Screw, Button Cap	8		48	K-231	Cover	1	
20	SSSS90008	Screw, Socket Set	2		49	FF34576Q	Switch	1	
21	NNK1/4-20	Kep Nut	8		50	SSZS93032	Screw, Sheet Metal	4	
22	SSHC01112	Screw, Hex Cap	8		51	K-235	Romex Connector	2	
23	97-3398	Key	1		52	FFHBL4570C	Plug	1	
24	1961-335A	Frame Assy	1		53	AA198-502	Regulator	1	
25	1961-354A	Clutch Support	1		54	AA198-5032	Gauge	1	
26	1961-365	Bearing Yoke	1		55	4130-001	Regulator Brkt	1	
27	1961-366	Modified Pulley	1		56	AA192-5	Treadle Switch	1	
28	1961-367	Motor Mount	1		57	3314DA41-PD	Pneumatic Diagram	1	24
29	1961-368	Belt Cover	1		AAC Drawing Number 192065A Rev. 2				

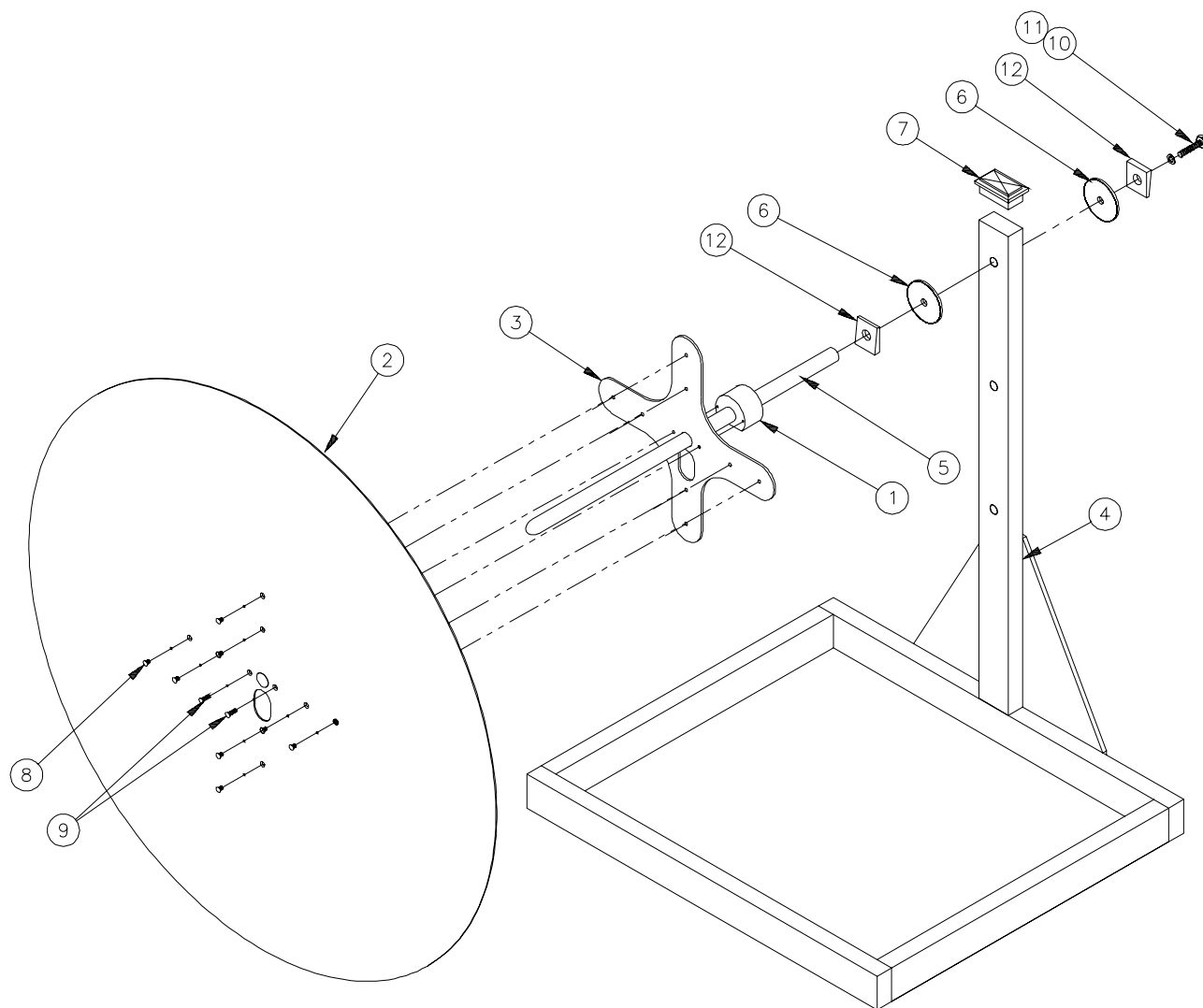




778-8 Roll Holder Assembly

#	Part #	Description	Qty	Pg	#	Part #	Description	Qty	Pg
1	1335-825	Drag Tension	1		10	CCSC8A1/2	Set Collar	2	
2	778-8A	Riser	1		11	NNH1/2-13	Hex Nut	4	
3	CCSCL7F	Clamp Collar	2		12	TTH32415	Threaded Handle	1	
4	778-8B	Rod, 1/2 x 34	1		13	SSHC01048	Screw, Hex Cap	1	
5	778-8C	Rod, Tension Assy	1		14	SSHC10048	Screw, Hex Cap	1	
6	A-2010-7C	Fluted Cone	2		15	SSZH#10048	Screw, Sheet Metal	4	
7	A-2010B	Bearing	4		16	SSHC45080	Screw, Hex Cap	4	
8	AA192-6A1	Rod Mount	1		AAC Drawing Number 192671C Rev. 2				
9	BBTRA815	Thrust Washer	8						

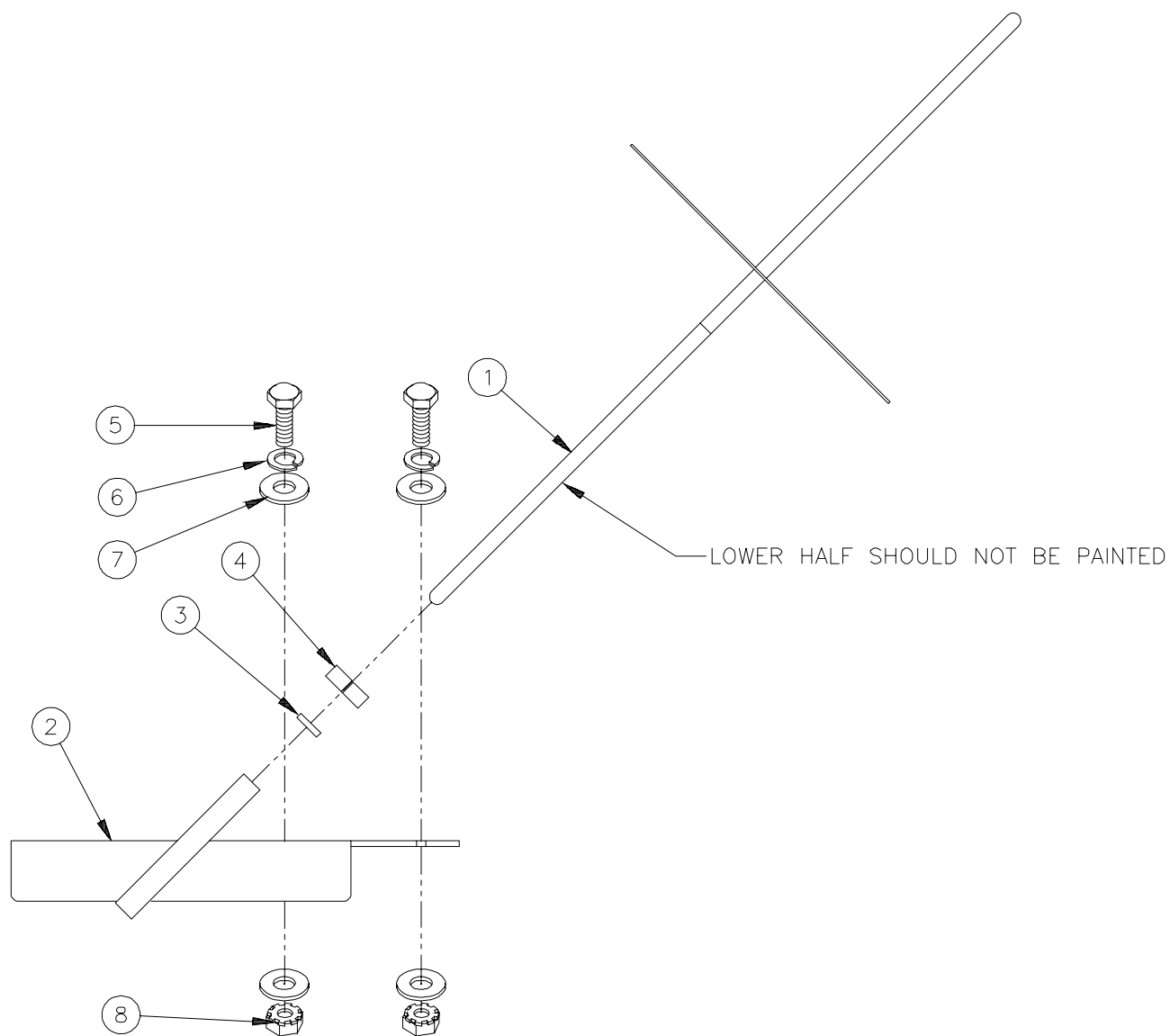




778-9 Roll Holder Assembly

#	Part #	Description	Qty	Pg	#	Part #	Description	Qty	Pg
1	1961-253	Unwind Hub	1		8	SSFC80016	Screw, Flat Allen	8	
2	1961-254C	Disc, 40"	1		9	SSFC80032	Screw, Flat Allen	2	
3	1961-258	Disc Support	1		10	SSHC25160	Screw, Hex Cap	1	
4	778-9A	Frame, Roll Holder	1		11	WWL3/8	Lock Washer	1	
5	33008202	Rod, 3/4 x 21	1		12	WWSQ080B	Square Washer	2	
6	33008226	Disc, 10GA, SS	2		AAC Drawing Number 191037B Rev. 0				
7	MM132-1496	End Cap	1						

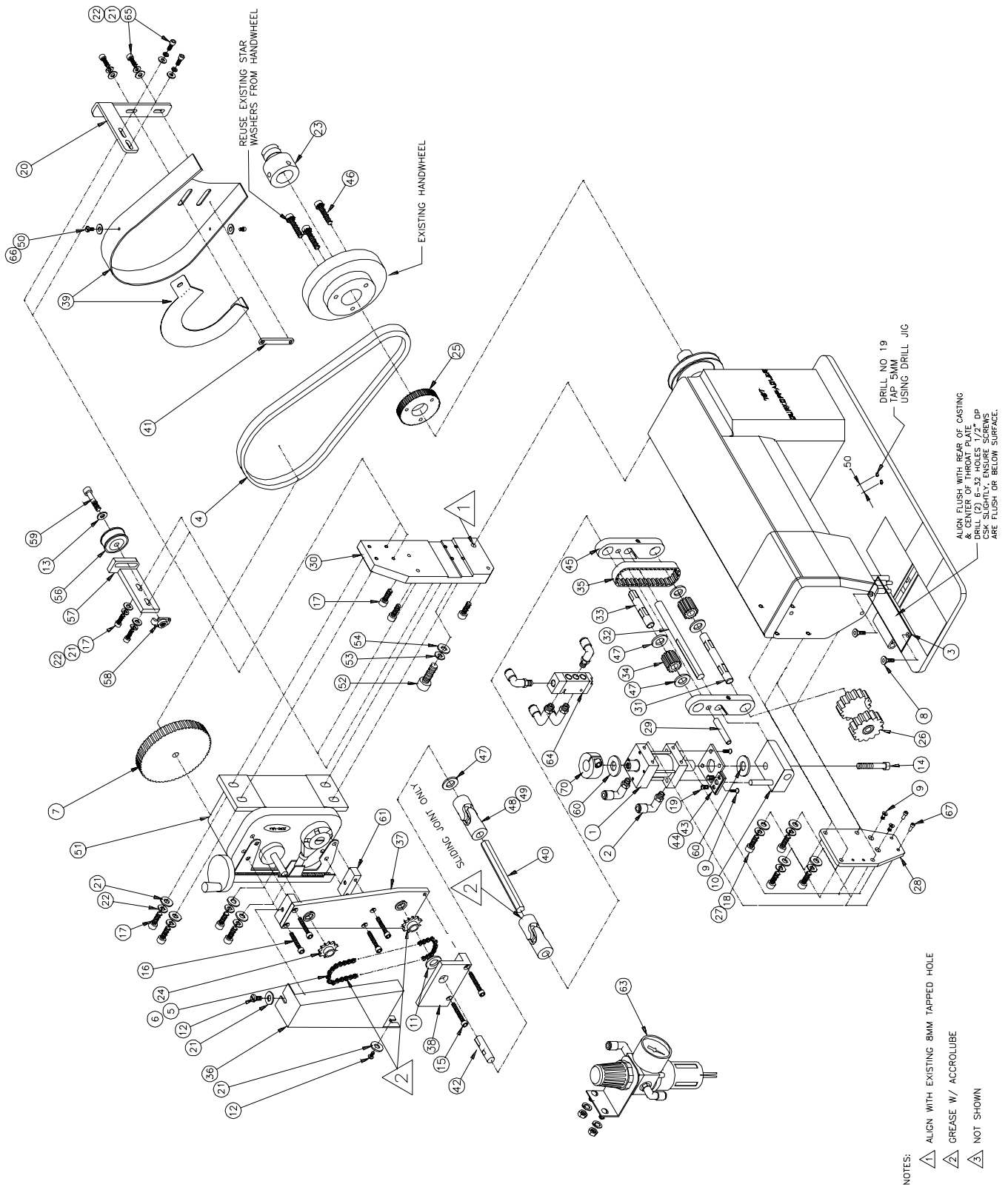




781-3-S14 Angled Roll Holder Assembly

#	Part #	Description	Qty	Pg	#	Part #	Description	Qty	Pg
1	781-3-S1401	Piping Stand	1		6	WWL5/16	Lock Washer	2	
2	781-3-S1402	Roll Holder Mnt	1		7	WWF5/16	Flat Washer	4	
3	BBTRA815	Thrust Washer	1		8	NNH5/16-18	Hex Nut	2	
4	CCCL8F	Clamp Collar	1		AAC Drawing Number 192065A Rev. 0				
5	SSHC10160	Screw, Hex Cap	2						

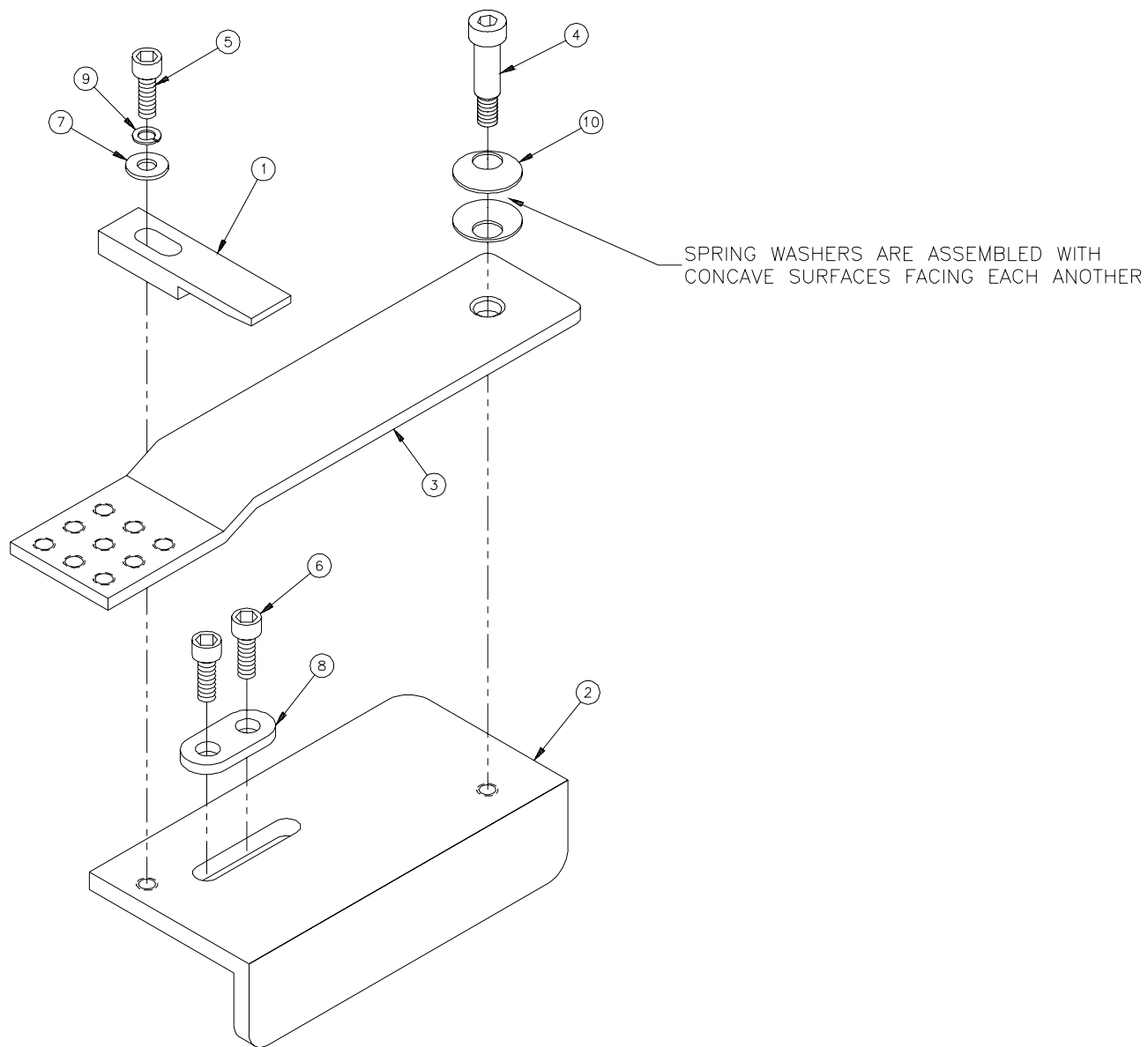




AAR35AA41 Z-Max Puller Assembly

#	Part #	Description	Qty	Pg	#	Part #	Description	Qty	Pg
1	AACFSD091	Air Cylinder	1		38	23482	Shaft Mnt	1	
2	AAQME-5-8	Quick Male Elbow	6		39	3560-036	Belt Guard	1	
3	3515-08B	Skid Plate	1		40	3524-6256	Hex Shaft, 8"	1	
4	GG240XL037	Gear Belt	1		41	40-579	Nut Plate	1	
5	MM25	Rivet Chain	14"		42	23471	Transfer Shaft	1	
6	MM25L	Connecting Link	1		43	350199	Alignment Brkt	1	
7	PP72XL037	Pulley	1		44	350198	Alignment Plate	1	
8	SSFC80024	Screw, Flat Allen	2		45	350195	Side Plate	2	
9	SSFC90032	Screw, Flat Allen	4		46	SSSCM5X30	Screw, Socket Cap	3	
10	3547-2	Alignment Block	1		47	3517	Thrust Bearing	5	
11	BBTT710-01	Thrust Washer	1		48	3524-06A	U-Joint	2	
12	SSPS98016	Screw, Pan Head	2		49	3524-06I	Installation Drawing	AR	
13	WWFS1/4	Flat Washer	1		50	SSSC85024	Screw, Socket Cap	2	
14	SSSC20064	Screw, Socket Cap	1		51	E2SC	Zero Max	1	
15	SSSC90064	Screw, Socket Cap	2		52	SSSCM8X25S	Screw, Socket Cap	1	
16	SSSC90112	Screw, Socket Cap	4		53	WWL5/16	Lock Washer	1	
17	SSSC98056	Screw, Socket Cap	9		54	WWFS5/16	Flat Washer	1	
18	SSSCM6X20	Screw, Socket Cap	4		55	AATP5/32	Air Line	10'	
19	SSTS85012	Screw, Truss Slotted	2		56	23411	Idler Pulley	1	
20	3515-20	Belt Guard Brkt	1		57	23412A	Idler Pulley Brkt	1	
21	WWF10	Flat Washer	10		58	40-257	T-Nut	1	
22	WWL10	Lock Washer	8		59	SSSC01080	Screw, Socket Cap	1	
23	1308-T61	Sync Adapter	1		60	WWU1/2	Urethane Washer	1	
24	1535EV-024	Sprocket	2		61	23469A	Standoff	2	
25	PP40XL037M	Gear Pulley	1		62	AAQMT-5-8	AirTee	1	
26	3514-122	Roller	1		63	AA198-5102	Regulator	1	
27	WWL1/4	Lock Washer	4		64	AAV180-4A	Pilot Valve	1	
28	3541-A41	Front Mount Plate	1		65	SSSC98032	Screw, Socket Cap	1	
29	3513-15	Connecting Shaft	1		66	WWFS6	Flat Washer	2	
30	3548Z-A41	Mount Plate	1		67	SSBC90032	Screw, Button Cap	2	
31	3513-16	Shaft, 3/8 x 3.63L	1		68	AAP35AA41-INS	Instructional	AR	21
32	3513-14	Shaft, 3/8 x 4.25L	1		69	AAP35AA41-PAR	Parameter Settings	AR	20
33	3513-13	Shaft, 3/8 x 2.25L	1		70	CCCL8F	Clamp Collar	1	
34	350196	Pulley	2		71	AAP35AA41PD	Pneumatic Diagram	AR	22
35	GG80XL075U	Gear Belt	1		72	AAP35AA41LAB	Labels	AR	
36	23480	Chain Guard	1		AAC Drawing Number 192670C Rev. 0				
37	23481	Mnt Brkt	1						

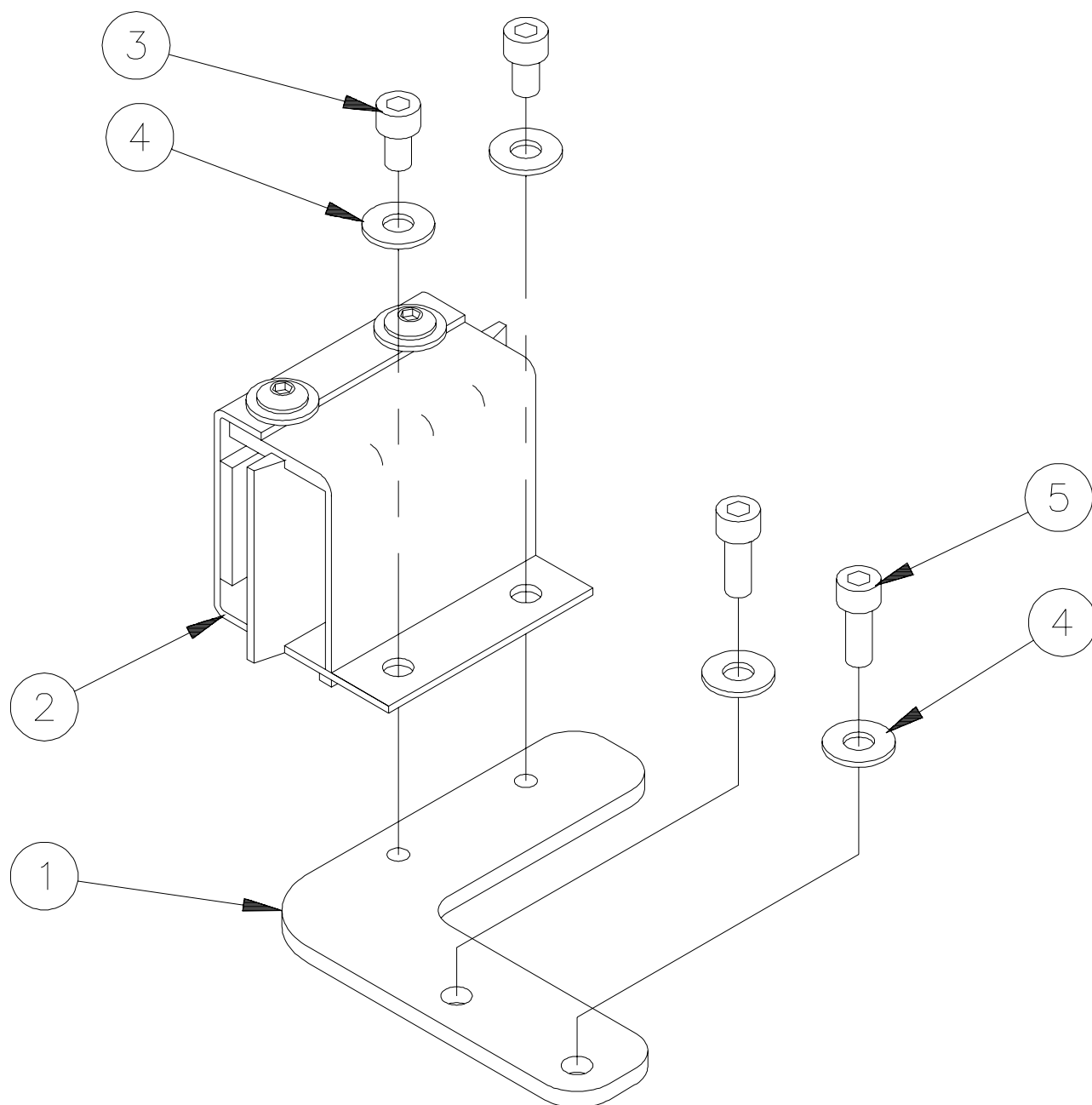




F212-A41 Swingout Bracket Assembly

#	Part #	Description	Qty	Pg	#	Part #	Description	Qty	Pg
1	1345-004A	Stop Block	1		7	WWFS10	Flat Washer	1	
2	3514-A41A	Mounting Plate	1		8	WWP1/2	Washer Plate	1	
3	3514-A41B	Folder Mount Arm	1		9	WWL10	Lock Washer	1	
4	SSAS016016	Screw, Allen Shoulder	1		10	WWSB075052	Spring Washer	2	
5	SSSC95032	Screw, Socket Cap	1		11	F212-A41JIG	Drill Jig	AR	
6	SSSCM5X20	Screw, Socket Cap	2		AAC Drawing Number 109201C Rev. 1				

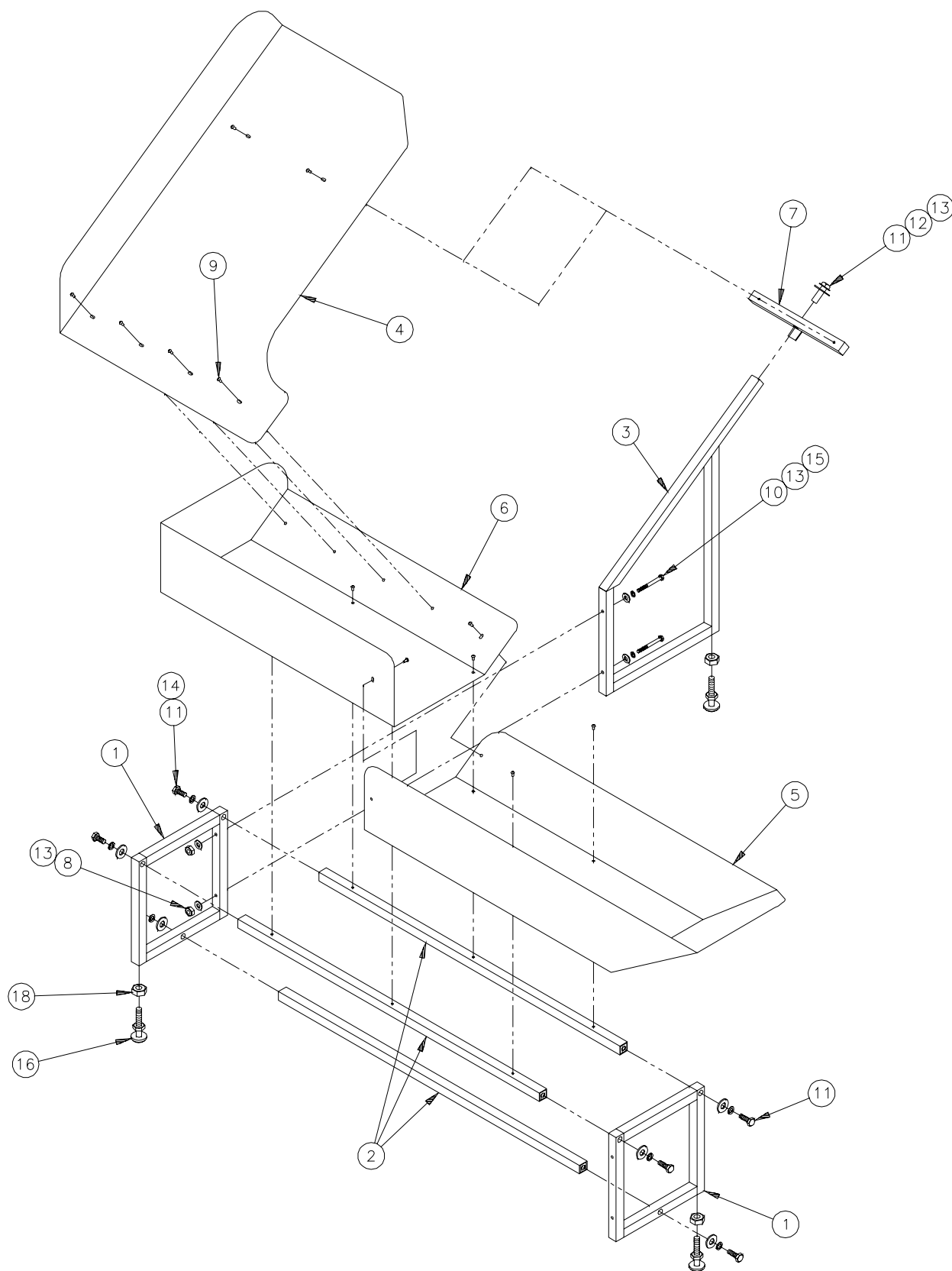




F221-T010 Tension Assembly

#	Part #	Description	Qty	Pg	#	Part #	Description	Qty	Pg
1	F221-T011	Mount Brkt	1		4	WWFS10	Flat Washer	4	
2	F221-T003	Tensioner Assy	1		5	SSSCM5X14	Screw, Socket Cap	2	
3	SSSC98016	Screw, Socket Cap	2		AAC Drawing Number 102787A Rev. 0				





3314D1000 Border Trough Assembly (Optional)

#	Part #	Description	Qty	Pg	#	Part #	Description	Qty	Pg
1	314D1100	Stand Side	2		11	SSHC45112	Screw, Hex Cap	7	
2	314D1200	Frame Tube	3		12	WWFS1/2	Flat Washer	7	
3	314D1300	Stand Brace	1		13	WWFS1/4	Flat Washer	4	
4	314D1400	Upper Trough	1		14	WWL1/2	Lock Washer	7	
5	314D1401	Front Trough	1		15	WWL1/4	Lock Washer	2	
6	314D1402	Rear Trough	1		16	MMFB4444	Rubber Foot	3	
7	314D1403	Frame Tube	1		17	MM100-1/8	Door Trim	19'	
8	NNH1/4-20	Hex Nut	2		18	NNH1/2-13	Hex Nut	3	
9	SSBC98024	Screw, Button Cap	14		AAC Drawing Number 192672C Rev. 0				
10	SSHC01160	Screw, Hex Cap	2						

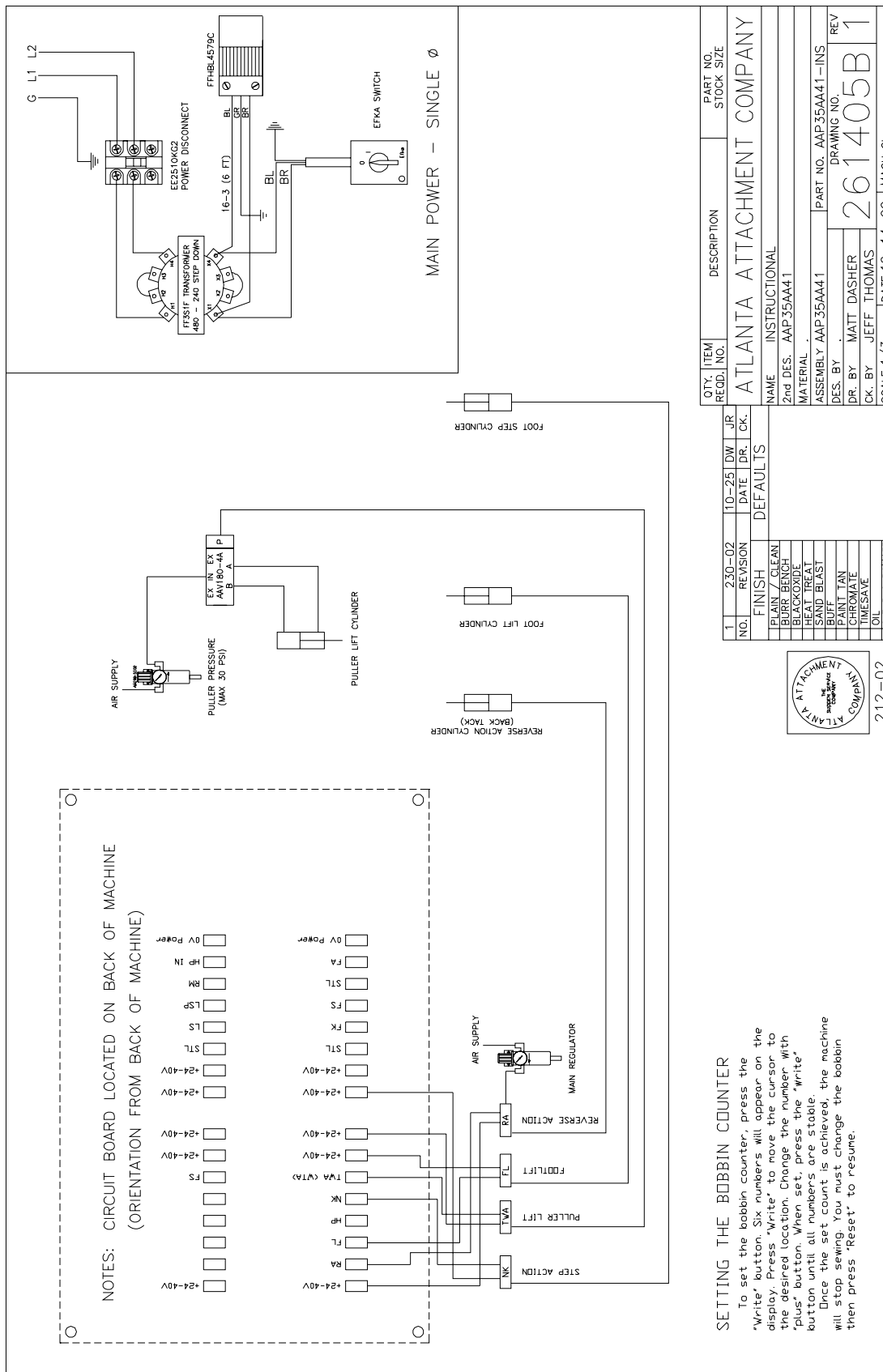


AAP35AA41-PAR Parameter Settings

Parameter No.	Description	Lmts Min	Lmts Max	Preset 1000R
F-100	Number of softstart stitches	0	254	1
F-110	Positioning speed	70	390	150
F-111	Upper limit of maximum speed	(P-121)	5000	2500
F-112	Start backtack speed	200	3000	1200
F-113	End backtack speed	200	3000	1200
F-114	Speed after light barrier sensing	200	3000	1200
F-115	Softstart speed	70	2500	400
F-116	Trimming speed	70	500	150
F-117	High lift walking speed=High limitation DB2000	400	2500	2000
F-118	Automatic stitch counting speed, depending on speed mode	400	5000	1200
F-121	Lower limit of the maximum speed (n-maxmin)	400	(P-111)	400
F-123	Backtack synchronization time for end backtack	0	500	40
F-124	Backtack synchronization speed for end backtack	100	3000	500
F-137	Stitch length during backtack	OFF	ON	ON
F-140	Mode needle up/down (A6)	1	5	1
F-170	Setting the reference position (EP=ndl goes into ndl plate)	0		*EP
F-171	Needle position 1=needle behind the bottom dead center	0	510	60
	Needle position 1A=internal switching point	0	510	200
	Needle position 2=thread lever before the upper dead center	0	510	466
	Needle position 2A=internal switching point	0	510	510
F-180	Number of reversion increments	20	400	116
F-182	Reversion ON/OFF	OFF	ON	ON
F-183	Switch off delay of needle colling after stop	5000	0	100
F-186	Stitches up until the roller is lowered	254	10	1
F-190	Activation angle of thread trimmer	0	450	80
F-191	Switch-off delay of thread tension release	0	990	50
F-192	Activation angle of thread tension release	0	450	260
F-193	Stop time for thread trimmer	0	500	30
F-196	Functions of both thread tension release with presser foot lifting	0	3	0
F-197	Functions of 2 thread tension with HP and Speedomat	0	3	0
F-202	Time of full power of sewing foot lifting	600	0	200
F-225	Speed regulation	0	3	0
	0 = "machine normal", 1 = "machine middle heavy			"
	2 = "machine heavy", 3 = cl 4180,4280			
F-262	Roller lifting	1	0	1
F-276	Correction seam	2	0	1
F-293	Selection of input	19	0	9
	Function by pushbutton			
	(A) "F1" on control panel			



AAP35AA41-INS Instructional Drawing



QTY.	ITEM	DESCRIPTION	PART NO.
RECD.	NO.		STOCK SIZE
ATLANTA ATTACHMENT COMPANY			
NAME INSTRUCTIONAL			
2nd DES. AAP35AA41			
MATERIAL			
ASSEMBLY AAP35AA41			
PART NO. AAP35AA41-INS			
DRAWING NO.			
261405B1			
DR. BY MATT DASHER			
CK. BY JEFF THOMAS			
SCALE 1/3			
DATE: 10-14-02			
MACH. CL.			

1	230-02	10-25	DW	JR
NO.	REVISION	DATE	DR.	CK.
DEFAULTS				
FINISH				
PLAIN / CLEAN				
BURR BENCH				
BLACK OXIDE				
HEAT TREAT				
SAND BLAST				
BUFF				
POLY TAN				
CHROMIUM				
TIMESAVE				
OIL				
CLEAR CHROME				

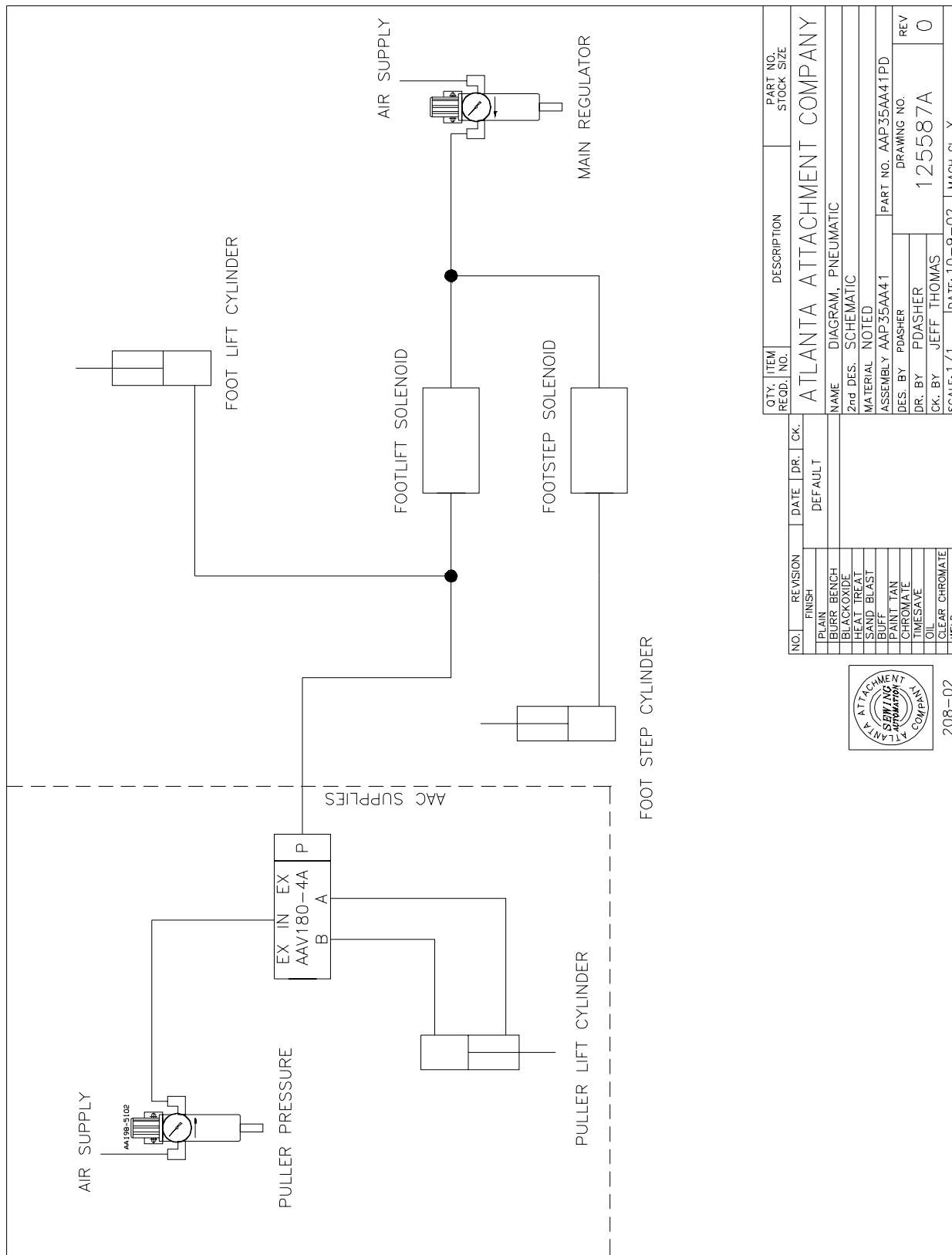


SETTING THE BOBBIN COUNTER

To set the bobbin counter, press the "Write" button. Six numbers will appear on the display. Press "Write" to move the cursor to the desired location. Change the number with "plus" button. When set, press the "write" button until all numbers are stable. Once the set count is achieved, the machine will stop sewing. You must change the bobbin then press "Reset" to resume.



AAP35AA41PD Pneumatic Diagram



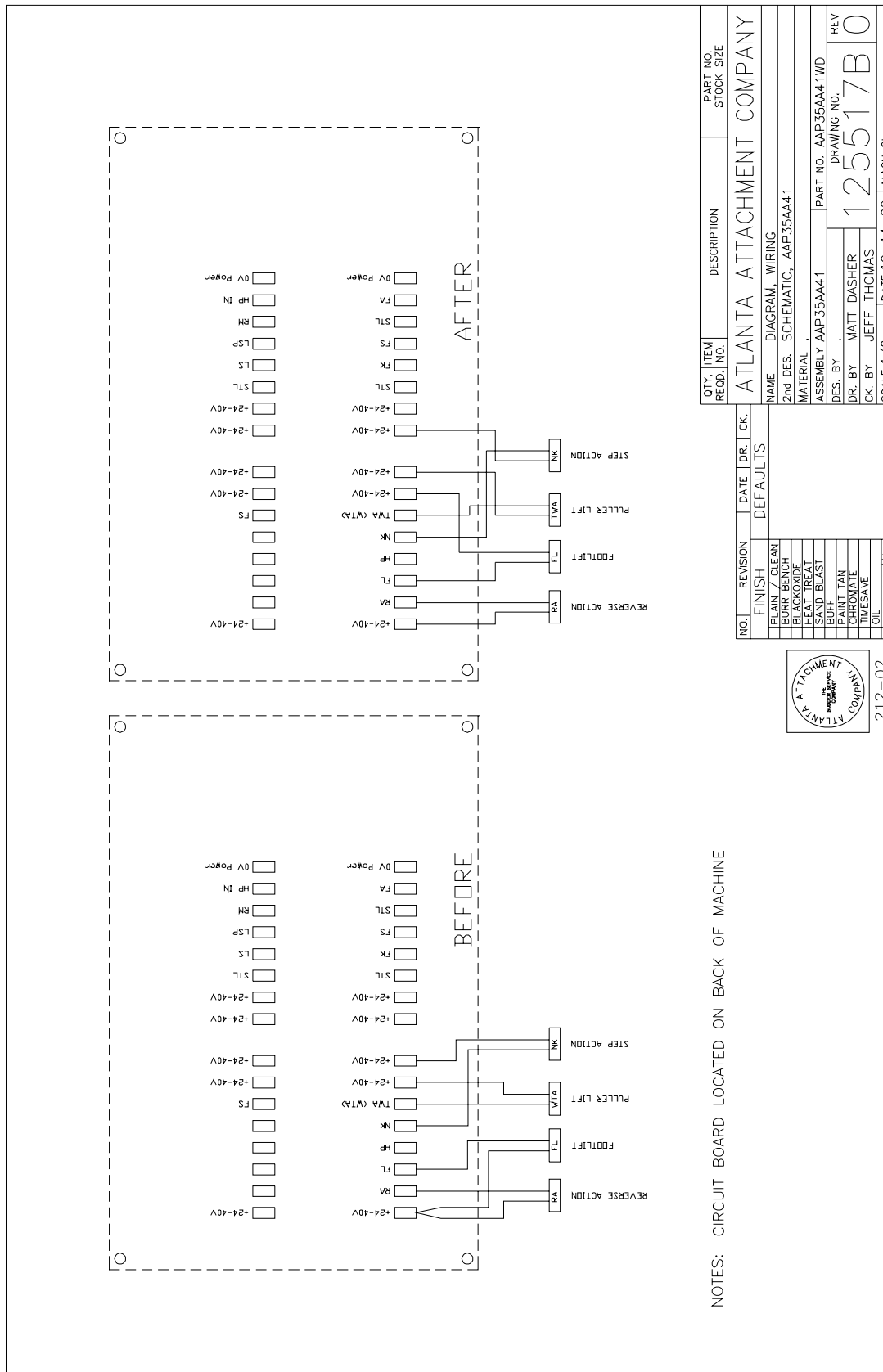
NO.	REVISION	DATE	DR.	CK.	QTY. ITEM RECD.	DESCRIPTION	PART NO. STOCK SIZE
	FINISH					ATLANTA ATTACHMENT COMPANY	
	PLAIN					NAME	DIAGRAM, PNEUMATIC
	BURR BENCH					2nd DES.	SCHEMATIC
	BLACKOXIDE					MATERIAL NOTED	
	HEAT TREAT					ASSEMBLY	AAP35AA41
	SAND BLAST					PART NO.	AAP35AA41PD
	PAINT TAN					DES. BY	PDASHER
	CHROMATE					DR. BY	JEFF THOMAS
	OIL					SCALE: 1/1	DATE: 10-9-02
	CLEAR CHROMATE						MACH CL X
	WELD						



208-02



AAP35AA41WD Wiring Diagram



QTY. ITEM RECD. NO.	DESCRIPTION	PART NO. STOCK SIZE
ATLANTA ATTACHMENT COMPANY		
NAME DIAGRAM, WIRING		
2nd DES. SCHEMATIC, AAP35AA41		
MATERIAL		
ASSEMBLY AAP35AA41		
PART NO. AAP35AA41WD		
DRAWING NO.		
REV 125517B0		
DES. BY MATT DASHER		
CK. BY JEFF THOMAS		
SCALE 1/2		
DATE: 10-14-02		
MACH. CL.		

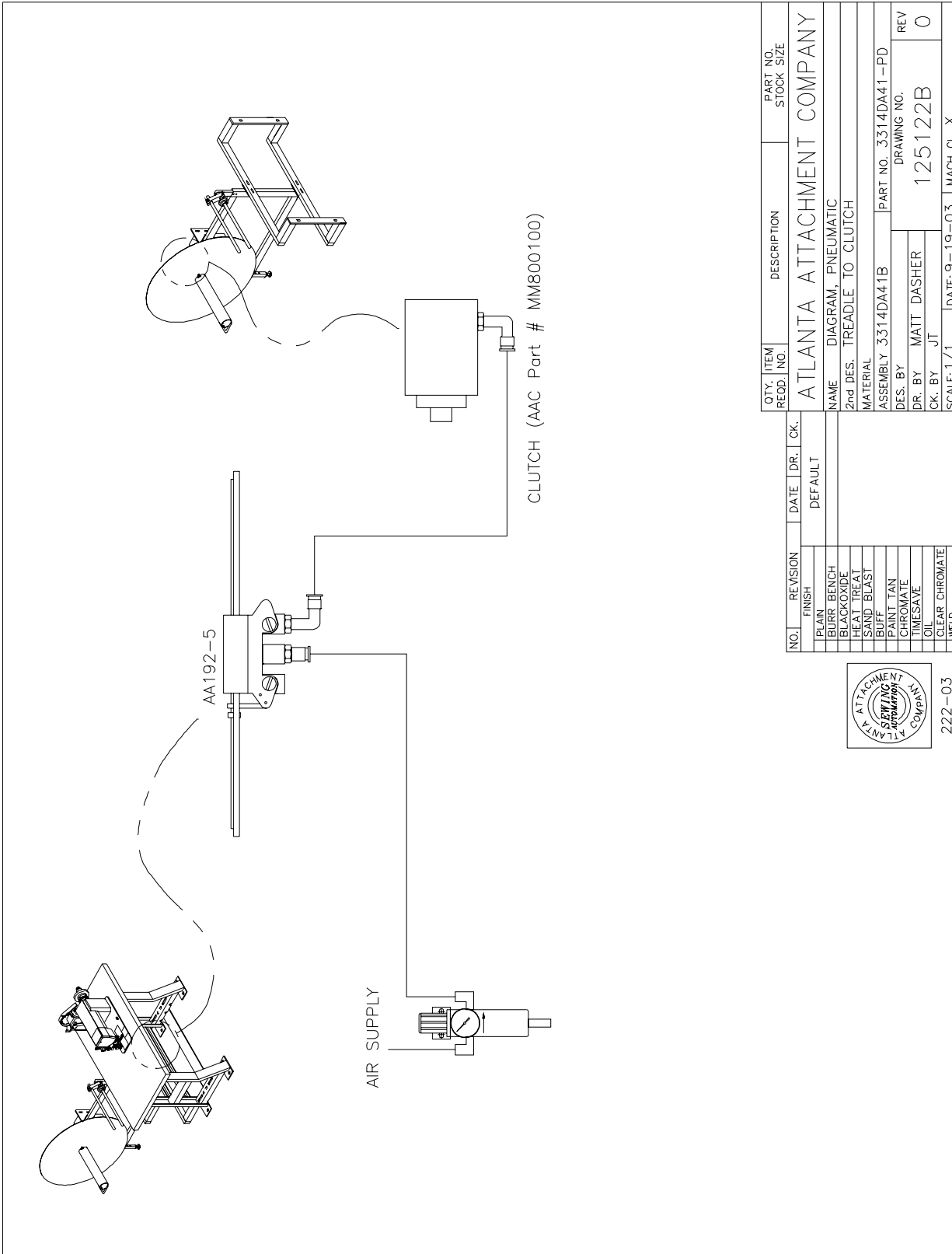
NO.	REVISION	DATE	DR.	CK.
FINISH				
PLAIN / CLEAN				
BURR BENCH				
BLACKOXIDE				
HEAT TREAT				
SAND BLAST				
PAINT TAN				
CHROMATE				
TIMESAVE				
OIL				
CLEAR CHROMATE				



212-02



3314DA41-PD Pneumatic Diagram



NO.	REVISION	DATE	DR.	CK.	QTY. ITEM RECD. INO.	DESCRIPTION	PART NO. STOCK SIZE
	FINISH				ATLANTA ATTACHMENT COMPANY		
	BURR BENCH				NAME DIAGRAM, PNEUMATIC		
	BLACKOXIDE				2nd DFS. TREADLE TO CLUTCH		
	HEAT TREAT				MATERIAL		
	SAND BLAST				ASSEMBLY 3314DA41B		
	PAINT TAN				PART NO. 3314DA41 - PD		
	CHROMATE				DRAWING NO. 125122B		
	OIL				DR. BY MATT DASHER		
	WELD				CK. BY JT		
					SCALE: 1/1		
					DATE: 9-19-03		
					MACH. CL. X		



222-03







Atlanta Attachment Company (AAC)

Statement of Warranty

Manufactured Products

Atlanta Attachment Company warrants manufactured products to be free from defects in material and workmanship for a period of eight hundred (800) hours of operation or one hundred (100) days which ever comes first. Atlanta Attachment Company warrants all electrical components of the Serial Bus System to be free from defects in material or workmanship for a period of thirty six (36) months.

Terms and Conditions:

- AAC Limited Warranty becomes effective on the date of shipment.
- AAC Warranty claims may be made by telephone, letter, fax or e-mail. All verbal claims must be confirmed in writing.
- AAC reserves the right to require the return of all claimed defective parts with a completed warranty claim form.
- AAC will, at its option, repair or replace the defective machine and parts upon return to AAC.
- AAC reserves the right to make the final decision on all warranty coverage questions.
- AAC warranty periods as stated are for eight hundred (800) hours or one hundred (100) days which ever comes first.
- AAC guarantees satisfactory operation of the machines on the basis of generally accepted industry standards, contingent upon proper application, installation and maintenance.
- AAC Limited Warranty may not be changed or modified and is not subject to any other warranty expressed or implied by any other agent, dealer, or distributor unless approved in writing by AAC in advance of any claim being filed.

What Is Covered

- Electrical components that are not included within the Serial Bus System that fail due to defects in material or workmanship, which are manufactured by AAC are covered for a period of eight hundred (800) hours.
- Mechanical parts or components that fail due to defects in material or workmanship, which are manufactured by AAC.
- Purchased items (sewing heads, motors, etc.) will be covered by the manufacturer's (OEM) warranty.
- AAC will assist in the procurement and handling of the manufacturer's (OEM) claim.

What Is Not Covered

- Parts that fail due to improper usage, lack of proper maintenance, lubrication and/or modification.
- Damages caused by; improper freight handling, accidents, fire and issues resulting from unauthorized service and/or personnel, improper electrical, plumbing connections.
- Normal wear of machine and parts such as Conveyor belts, "O" rings, gauge parts, cutters, needles, etc.
- Machine adjustments related to sewing applications and/or general machine operation.
- Charges for field service.
- Loss of time, potential revenue, and/or profits.
- Personal injury and/or property damage resulting from the operation of this equipment.

Atlanta Attachment Company (AAC)

Declaración de Garantía

Productos Manufacturados

Atlanta Attachment Company garantiza que los productos de fabricación son libre de defectos de material y de mano de obra durante un periodo de ochocientos (800) horas de operación o cien (100) días cual llega primero. Atlanta Attachment Company garantiza que todos los componentes del bus serie son libre de defectos de material y de mano de obra durante un periodo de treinta y seis (36) meses.

Términos y Condiciones:

- La Garantía Limitada de AAC entra en efecto el día de transporte.
- Reclamos de la Garantía de AAC pueden ser realizados por teléfono, carta, fax o correo electrónico. Todo reclamo verbal tiene que ser confirmado vía escrito.
- AAC reserva el derecho para exigir el retorno de cada pieza defectuosa con un formulario de reclamo de garantía.
- AAC va, según su criterio, reparar o reemplazar la máquina o pieza defectuosa devuelto para AAC.
- AAC reserva el derecho para tomar la decisión final sobre toda cuestión de garantía.
- Las garantías de AAC tienen un validez de ochocientos (800) horas o cien (100) días cual llega primero.
- AAC garantiza operación satisfactoria de sus máquinas en base de las normas aceptadas de la industria contingente en la instalación y mantenimiento adecuada.
- La garantía de AAC no puede ser cambiada o modificada y no está sujeta a cualquier otra garantía implicado por otro agente o distribuidor menos que sea autorizado por AAC antes de cualquier reclamo.

Lo Que Está Garantizado

- Componentes eléctricos que no están incluidos dentro del sistema Bus Serie que han sido manufacturados por AAC son garantizados por un periodo de ochocientos (800) horas.
- Mechanical parts or components that fail due to defects in material or workmanship, which are manufactured by AAC.
- Componentes comprados (Motores, Cabezales,) son protegidos debajo de la garantía del fabricante.
- AAC asistirá con el manejo de todo reclamo de garantía bajo la garantía del fabricante.

Lo Que No Está Garantizado

- Falla de repuestos al raíz de uso incorrecto, falta de mantenimiento, lubricación o modificación.
- Daños ocurridos al raíz de mal transporte, accidentes, incendio o cualquier daño al resultado de servicio por personas no autorizadas o instalaciones incorrectas de conexiones eléctricas o neumáticas.
- Desgaste normal de repuestos como correas, anillos de goma, cuchillos, agujas, etc.
- Ajustes de la máquina en relación a las aplicaciones de costura y/o la operación en general de la máquina.
- Gastos de reparaciones en el campo.
- Pérdida de tiempo, ingresos potenciales, y/o ganancias.
- Daños personales y/o daños al propiedad al resultado de la operación de este equipo.

© 2005 Atlanta Attachment Company. All rights reserved.

© 2005 Atlanta Attachment Company. Derechos reservados.